

Wafer™

LIGHTPADS

WAFER 1 (A4)
U35151

WAFER 2 (A3)
U35152

WAFER 3 (A2+)
U35153

Features Sheet



A2+

Illuminated area:
600 x 460mm
(23.5 x 18")

A3

Illuminated area:
432 x 310mm
(17 x 12.2")

A4

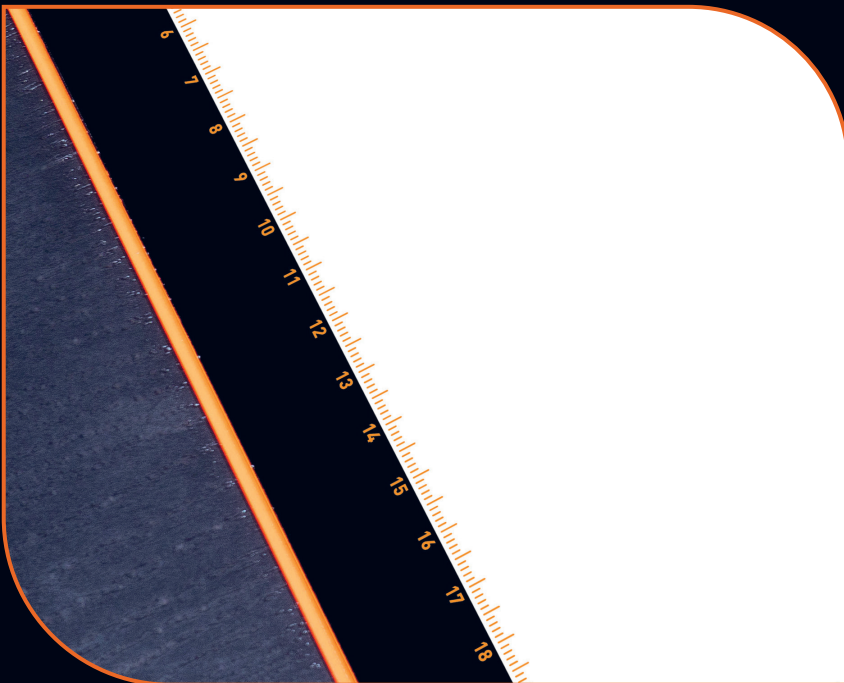
Illuminated area:
318 x 218mm
(12.5 x 8.5")





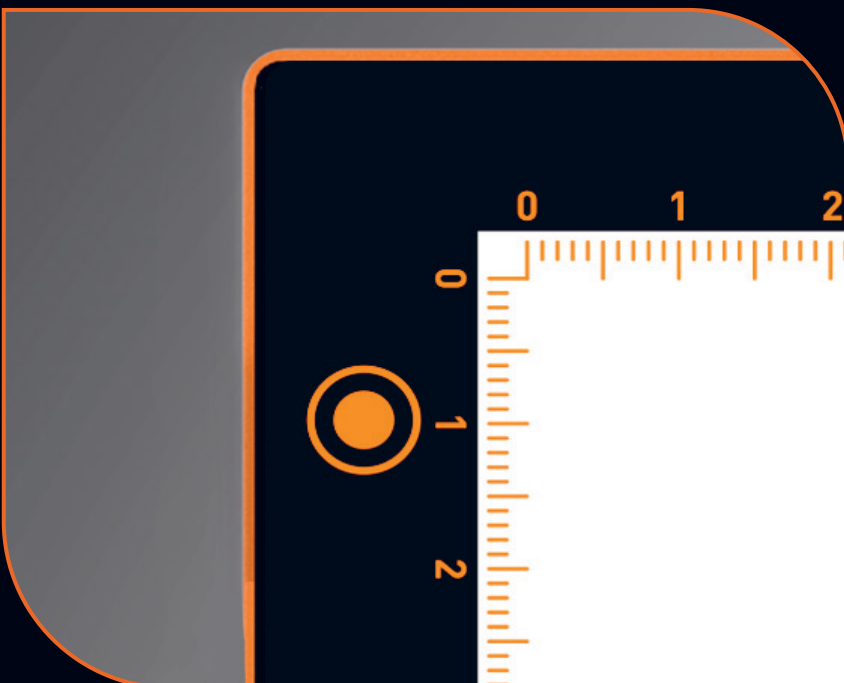
EDGE-TO-EDGE ILLUMINATION

Premium LEDs provide super-bright, edge-to-edge illumination for optimal visibility and uniform lighting



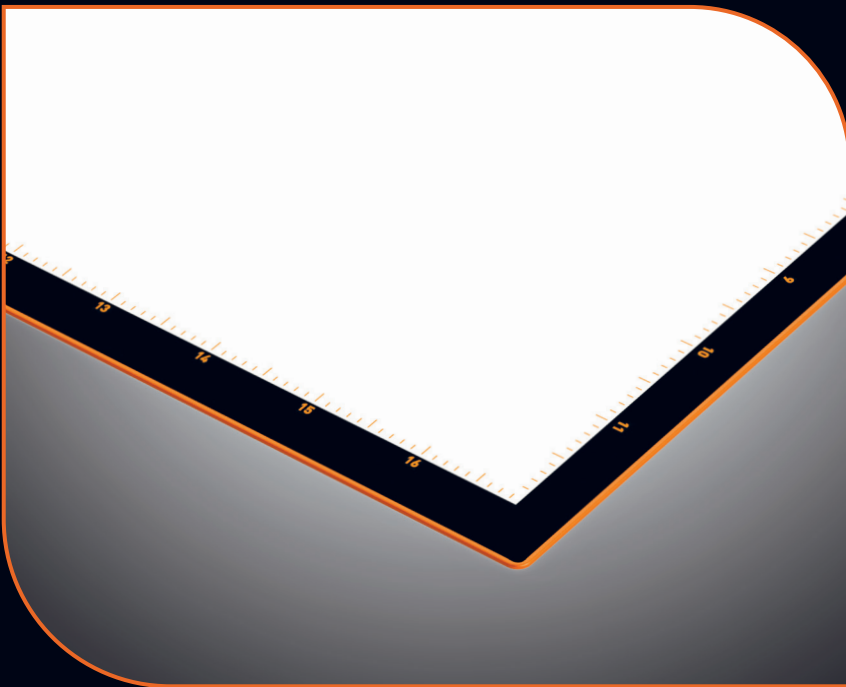
PRECISION RULER GUIDES

Illuminated ruler markings in both inches and centimeters built into the tracing area for high accuracy and fine details



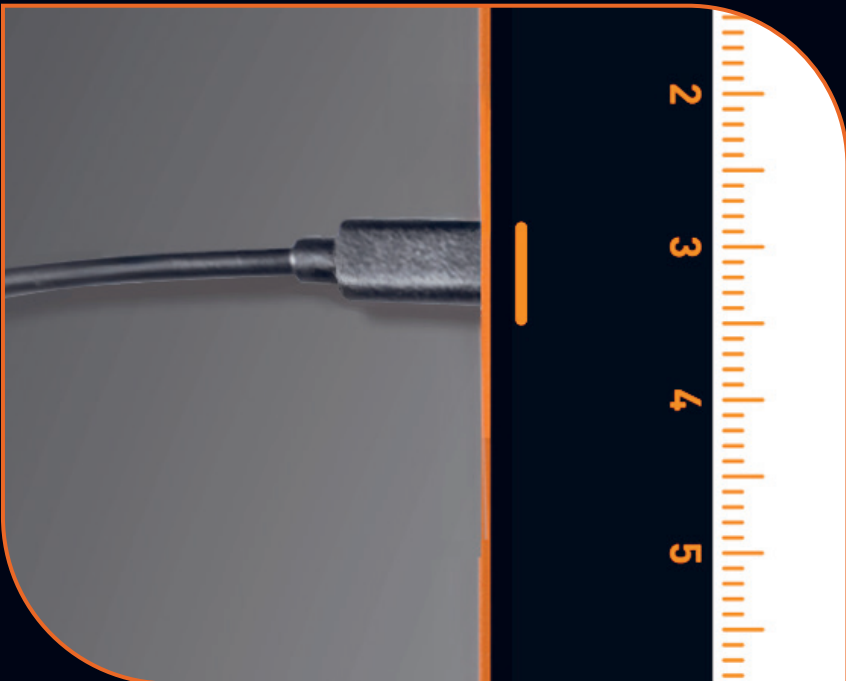
ADJUSTABLE BRIGHTNESS

3-step dimming allows seamless brightness adjustment to suit a wide range of materials (up to approx. 148 lb cover stock / 400gsm)



SLIM & SLEEK DESIGN

Slim, lightweight design ensures excellent portability and effortless integration into any creative workspace



USB-C CABLE INCLUDED

Supplied with a USB-A to USB-C cable for fast, reliable power and wide device compatibility (Wafer 1 and Wafer 2 only).
Wafer 3 supplied with plug-in adapter



IDEAL FOR CREATIVES

Essential for any creative workflow requiring detail, precision, and consistent lighting